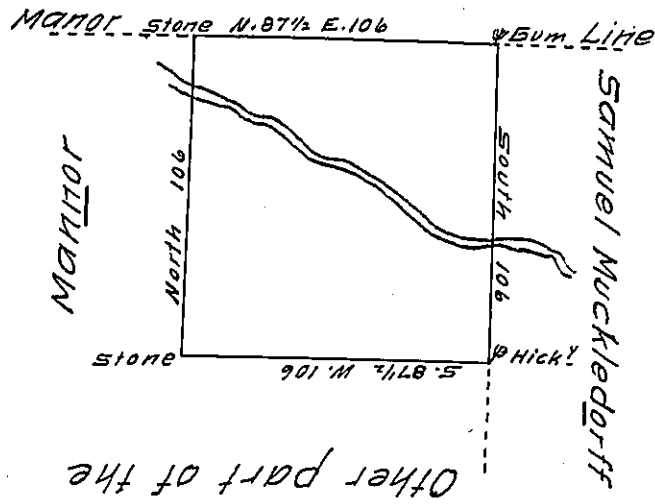


Wm Darlington



A Draught of a tract of land situate in Springtown Manor in the County of Chester now in the possession of William Darlington, beginning at a marked hickery in a line of Samuel Muckledurff's land thence by other part of said Manor S. 87 1/2 W. 106 perches to a stone and North 106 perches to a stone in the Manor line thence along said line N. 87 1/2 E. 106 perches to a ^{marked} Bum thence by land of Samuel Muckledurff South 106 perches to the place of beginning containing sixty six acres & quarter of an acre with and the allowance of 6 ~~ft~~ for Roads &c. Surveyed the 18th day of October 1753 by direction of the Hon'ble the Proprietaries.

J. Nich^o Scull

IN TESTIMONY that the above is a copy of the original remaining on file in the Department of Internal Affairs of Pennsylvania, made conformably to an Act of Assembly approved the 16th day of February, 1833, I have hereunto set my Hand and caused the Seal of said Department to be affixed at Harrisburg, this twenty fourth day of March 1910

Henry Howell
Secretary of Internal Affairs.